



Review Article

Association of bone mineral density and trabecular bone score with cardiovascular disease

Tzyy-Ling Chuang^{a,b}, Mei-Hua Chuang^{c,d}, Malcolm Koo^e, Chun-Hung Lin^f, Yuh-Feng Wang^{a,b,g,*}

^aDepartment of Nuclear Medicine, Dalin Tzu Chi Hospital, Buddhist Tzu Chi Medical Foundation, Chiayi, Taiwan, ^bSchool of Medicine, Tzu Chi University, Hualien, Taiwan, ^cFaculty of Pharmacy, National Yang-Ming University, Taipei, Taiwan, ^dDepartment of Pharmacology, School of Medicine, Tzu Chi University, Hualien, Taiwan, ^eGraduate Institute of Long-Term Care, Tzu Chi University of Science and Technology, Hualien, Taiwan, ^fDepartment of General Surgery, Dalin Tzu Chi Hospital, Buddhist Tzu Chi Medical Foundation, Chiayi, Taiwan, ^gCenter of Preventive Medicine, Dalin Tzu Chi Hospital, Buddhist Tzu Chi Medical Foundation, Chiayi, Taiwan

Submission : 23-Oct-2019
Revision : 15-Nov-2019
Acceptance : 03-Dec-2019
Web Publication : 17-Jan-2020

ABSTRACT

Traditionally, osteoporosis and cardiovascular disease (CVD) are considered as separate chronic diseases. Increasing evidence now links osteoporosis with hypertension, abnormal lipid metabolism, atherosclerosis, vascular calcification (VC), and congestive heart failure. VC coexists with bone loss, and aortic calcification is a strong predictor of low bone mineral density (BMD) and fragility fractures. The same holds true for coronary artery calcification (CAC): the lower the BMD, the higher the CAC. Trabecular bone score (TBS) iNsight software can analyze the existing BMD database to obtain the bony microstructure score (TBS). Many TBS-related studies include fracture risk, normal aging, diabetes, potential genes, obesity, and asthma severity prediction. The inverse relationship of TBS to VC may provide insight into bone–vascular interactions in chronic kidney disease. A higher TBS has been associated with moderate, but not high, CAC. One explanation is that bone microstructural remodeling becomes more active during early coronary calcification. Increased risk of 10-year likelihood of hip fracture and major osteoporotic fracture as estimated by the fracture risk assessment tool FRAX[®] is significantly and independently associated with more severe CAC scores. Dual-energy X-ray absorptiometry and FRAX[®] can be used to predict fracture risk and CAC scores, identifying patients who may benefit from early intervention. This review will discuss the relationship and possible mechanism of BMD, TBS, and FRAX[®] with CVD and VC or CAC.

KEYWORDS: Bone mineral density, Cardiovascular disease, Coronary artery calcification, Trabecular bone score

INTRODUCTION

Osteoporosis and atherosclerosis frequently occur concomitantly, may share similar pathogenic mechanisms, and could be biologically linked [1-3]. However, their independent association is still unclear [4]. Vascular calcification (VC) is a major contributor to cardiovascular disease (CVD), which in turn contributes to VC [5]. Coronary artery calcification (CAC), a type of VC which occurs in the coronary artery, plays a role in the pathogenesis of coronary atherosclerosis [6]. The degree of VC or CAC is also a predictor of cardiovascular risk and mortality and is inversely correlated with bone mineral density (BMD) [7-9].

While some studies have investigated the relationship of BMD with CVD, VC, or CAC, the mechanism remains unclear. This review will explore the differences in trabecular BMD and cortical BMD and their relationship to CVD, VC, or CAC. This article will also review the clinical application

of trabecular bone score (TBS) and fracture risk assessment tool (FRAX[®]) in terms of their association with CVD, VC, or CAC.

BONE MINERAL DENSITY AND TRABECULAR BONE SCORE


The diagnosis of osteoporosis typically depends on area BMD measurements using dual-energy X-ray absorptiometry (DXA) [10]. Practically, DXA studies present BMD by including both cortical and trabecular bone content. However, cancellous bone microarchitecture is the key determinant of bone strength, which is often measured by quantitative computed tomography (qCT). However, this procedure involves

*Address for correspondence: Dr. Yuh-Feng Wang, Department of Nuclear Medicine, Dalin Tzu Chi Hospital, Buddhist Tzu Chi Medical Foundation, 2, Min-Sheng Road, Dalin Town, Chiayi, Taiwan. E-mail: yuhfeng@gmail.com

This is an open access journal, and articles are distributed under the terms of the Creative Commons Attribution-NonCommercial-ShareAlike 4.0 License, which allows others to remix, tweak, and build upon the work non-commercially, as long as appropriate credit is given and the new creations are licensed under the identical terms.

For reprints contact: WKHLRPMedknow_reprints@wolterskluwer.com

How to cite this article: Chuang TL, Chuang MH, Koo M, Lin CH, Wang YF. Association of bone mineral density and trabecular bone score with cardiovascular disease. Tzu Chi Med J 2020; 32(3): 234-9.

Access this article online	
Quick Response Code:	Website: www.tcmjmed.com
	DOI: 10.4103/tcmj.tcmj_234_19

higher radiation exposure, is more expensive, and requires a larger instrument requirement than DXA [11]. For cases with DXA measurement of the lumbar spine, the BMD value may be overestimated relative to cases with abdominal aorta calcification [12].

The TBS is a texture parameter that can be computed from the two-dimensional lumbar spine DXA image [13]. Since the BMD T-score may not fully capture the risk of fragility fracture, the noninvasive analytic tool TBS was developed. The TBS is a texture parameter that evaluates pixel gray-level variations in DXA images of the lumbar spine [10]. TBS decreases with age and appears to reflect qualitative aspects of skeletal structure complementary to BMD [13]. TBS, a variogram, is related to bone microarchitecture (bones with few large spans, i.e., low TBS, are mechanically weaker than those with a myriad of fine spans, i.e. high TBS) and is complementary to predict fracture risk, as well as lumbar spine BMD measurements. Therapeutic strategies for osteoporosis differ in terms of TBS [13].

Unlike qCT, with its higher radiation exposure and increased expense, TBS measure the trabecular microarchitecture with a simple DXA machine [14], which is cheaper, involves less radiation exposure, and only needs an immediately “1 click – 3 s” additional software analysis when measuring the traditional lumbar spine BMD. No additional examinations or radiation doses are needed. The TBS can also be retrospectively analyzed in the same equipment from an existing DXA scan to quantify the bone microarchitectural texture.

CARDIOVASCULAR DISEASE/CORONARY ARTERY CALCIFICATION

The CAC score, measured by multidetector row computed tomography (MDCT), is a surrogate marker for total calcified plaque burden (subclinical and overt atherosclerosis) and may predict future coronary events independently of other risk factors [15,16]. The absence of CAC strongly excludes obstructive coronary artery disease (CAD), and CAC predicts the presence of coronary atherosclerotic plaque. However, its absence does not exclude the presence of coronary atherosclerotic plaque, especially in patients aged <55 years. Plaque composition shifts from noncalcified to calcified with increasing age, which may affect the vulnerability of these lesions over time [17]. CAC has a role in CAD development [18-20]. Indeed, CAC and CT angiography in asymptomatic elderly patients can predict CAD [21]. In one analysis using simple linear regression [22], similar to prior studies, hypertension, hyperlipidemia, blood pressure, and triglyceride levels were positively correlated with the CAC score and with the risk for coronary as well as other cardiovascular events [23,24]. CAC has also been associated with high serum concentrations of some biomarkers, including undercarboxylated osteocalcin and fibroblast growth factor 23 [25,26].

BONE MINERAL DENSITY AND CARDIOVASCULAR DISEASE/CORONARY ARTERY CALCIFICATION

BMD has been inversely associated with subclinical and clinical CVD, even after adjusting for potential confounding

factors [27]. Subjects who self-report a previous myocardial infarction had higher odds of having low BMD, when adjusting for CVD and osteoporosis risk factors; this risk was not significant in women but was significant in men [28]. Postmenopausal women with osteoporosis are at an increased risk for cardiovascular events, in proportion to the severity of osteoporosis at the time of diagnosis [29].

Some studies showed an inverse association between BMD or volumetric BMD (vBMD) and the score or presence of aortic calcification (AC) or CAC [3,30,31]. This relationship may be related to age [27], shared risk factors (smoking) or common pathophysiological mechanisms (hormones or inflammatory cytokines) [3]. Although many studies have found little or no association between BMD and CAC, several studies did [32]. This inconsistency in results may be due to sex-and/or ethnicity-specific differences [3,27]. An increased CAC score and subclinical atherosclerosis plaque burden as determined by MDCT has been associated with low BMD in all women, independent of cardiovascular risk factors and age [33]. BMD of the femur and lumbar spine were inversely associated with the CAC score after adjusting for age and metabolic parameters in women, but not in men [33]. In the study, their correlation between BMD and CAC score was more significant for the femur area than for the lumbar spine. In another study analyzing FRAX® and CAC, only the right femoral neck T-score and left total hip T-score showed a significantly inverse relationship with the CAC score [34].

One model was reported to show that hypertension, hyperlipidemia, triglyceride, and L spine T-score were predictors of CAC when CAC was >0 and could explain 73.2% of the variance in CAC [22]. Longitudinally, the Rotterdam Study showed no association between CAC and BMD or fracture risk, except for BMD loss with higher follow-up CAC in women, an association which may be related to low estrogen levels [35]. In patients on dialysis, high parathyroid hormone level and osteoporosis predict CAC progression [36]; and bone volume/total volume scores, assessed by high-resolution peripheral qCT, were significantly lower in patients with CAC scores ≥ 100 [37]. In a study measuring BMD with DXA, lower BMD (total body BMD and BMD of subregions, in particular the legs) was independently associated with higher CAC scores, but only in female patients with end-stage renal disease [38]. Another study on 5,590 consecutive individuals, which calculated thoracic BMD by MDCT, found that lower BMD levels were independently associated with CAC severity, and CAC could predict mortality in both genders across ethnicities [39]. A recent 2019 study, measuring volumetric thoracic BMD and CAC using MDCT, also found BMD and CAC were inversely related in both men and postmenopausal women, supporting the hypothesis of a direct relation between bone loss and the development of atherosclerosis, irrespective of sex [32].

It is estimated that about 30% of postmenopausal women in developed countries have osteoporosis and at least 40% of women and 15%–30% of men with osteoporosis will sustain a fracture [40,41]. Another study showed that 4.7% of their study cohort had osteoporosis, and 26.3% had low bone mass

in totally included 490 middle-aged women [3]. A study focus on the CAC in postmenopausal women showed that 17.7% of the patients had osteoporosis in the lumbar spine and 44.6% had osteopenia, whereas in the femoral neck, 14.0% had osteoporosis and 46.8% had osteopenia [42]. In this study, according to lumbar spine T-score, it showed 10.4% osteoporosis, 35.1% osteopenia in patients without CAC, and 22.9% osteoporosis, 51.4% osteopenia in patients with CAC. According to femoral neck T-score, data reported 7.8% osteoporosis, 41.6% osteopenia in group without CAC, and 18.3% osteoporosis, 50.5% osteopenia in group with CAC [42].

TRABECULAR VOLUMETRIC BONE MINERAL DENSITY, TRABECULAR BONE SCORE, AND CARDIOVASCULAR DISEASE/CORONARY ARTERY CALCIFICATION

Cortical and trabecular bone is known to have different turnover rates and age-related patterns [43]. Previous studies of the relationship between trabecular vBMD and AC or CAC have yielded inconclusive results [3,27,35,44]. Cortical, but not trabecular, vBMD was associated with significantly decreased odds of the prevalence of abdominal AC (AAC) independent of other traditional risk factors (age, body mass index [BMI], lifestyle factors, diabetes, and hypertension) [27]. Other studies showed an association of trabecular vBMD with AC or CAC [3]. In a study of vBMD and VC measured by CT in middle-aged women, the population of AC and CAC was divided into three levels and lower trabecular BMD of the spine was found significantly associated with both high AC levels and high CAC levels; the latter was not significant after adjusting for age [3]. No association of vBMD with moderate AC or CAC was observed [3].

TBS, obtained from lumbar spine DXA images, measures the trabecular microarchitecture of the bone and provides a surrogate measure of microarchitectural integrity not captured by BMD. An Australian study found no significant correlation of AAC scores to any BMD parameter. However, TBS values were inversely correlated to AAC scores ($\beta = -0.206$, $P = 0.013$), a relationship that remained significant in multivariable linear regression after adjusting for age, BMI, and time on dialysis ($\beta = -0.160$, $P = 0.031$) [45]. Similarly, a Taiwan study suggested that TBS value (per 1 standard deviation increase) could predict moderate CAC (odds ratio [OR] = 2.39, $P = 0.011$) but not high CAC (OR = 1.03, $P = 0.928$). This relationship still existed even after adjusting for covariates [11]. This result is significantly different from those of previous studies with qCT and CAC [4,37]. The difference may be due to the diverse methodologies used. Since VCs have complex mechanisms, another possible explanation may be that early CAC is associated with a more complex variogram of bone microarchitecture during bone remodeling. However, when CAC is far advanced, the higher TBS has no significance in predictive value. This would mean that the molecular cascades and procalcific microenvironment are dynamic during VC, changing as the bone microarchitecture forms. During early CAC, both are similar. In severe CAC, the direction of the kinetic equilibrium

is stable and therefore the relationship between CAC and TBS is not further developed [11].

FRAX® AND CARDIOVASCULAR DISEASE/ CORONARY ARTERY CALCIFICATION

Fragility fractures are associated with a high risk of cardiovascular events, and patients with CVD have a higher fracture risk [46-48]. Hip fractures are associated with higher risk of myocardial infarction [49]. Patients with recent coronary events have a higher prevalence of vertebral fractures, a risk independent of BMD [50]. In a recent meta-analysis including 28 longitudinal studies and 1,107,885 participants, low BMD and fractures were associated with a small but significantly increased risk of CVD and possibly death. The presence of fractures at baseline was associated with an increased risk of developing CVD (hazard ratio = 1.20; 95% confidence interval, 1.06-1.37; $I^2 = 91\%$), independent of other known conditions [40].

Severe AAC is associated with higher cardiovascular morbidity and mortality, lower BMD, and higher bone fragility and risk of fracture [30,51-53]. The link was significant for major fracture types, but data were less consistent when various fractures were analyzed jointly [1,54].

FRAX®, which combines BMD and clinical risk factors to provide a comprehensive osteoporotic fracture risk assessment, may serve as a general guideline for the clinical management of osteoporosis [55]. Clinical risk factors used in FRAX® include age, sex, weight, height, a prior history of fracture, use of oral glucocorticoids, current smoking, alcohol intake of three or more units daily, rheumatoid arthritis, a parental history of a hip fracture, and other secondary causes of osteoporosis. FRAX® effectually estimates the 10-year likelihood of hip and major osteoporotic fracture. Fracture risk, rather than mere BMD, was significantly positively correlated with CAC scores. This correlation is probably because, in addition to the BMD value, the calculation of major osteoporotic fracture and hip fracture risk takes into account other fracture risk factors [34].

MECHANISM

Adiponectin, leptin, and vaspin are related to markers of bone and vascular health and may contribute to the observed association between osteoporosis and CVD [56]. Although osteoporosis, VC and CVD share common risk factors; direct pathophysiological pathways also link these entities [57]. Recently, VC promoters and inhibitors have been identified [2]. Cell-culture study has demonstrated that oxidized low-density lipoprotein-cholesterol can inhibit the differentiation of osteoblasts in bone, as in osteoporosis, and promote calcification of smooth muscle vascular cells, as in atherosclerosis [58]. Calcification of arteries involves many factors, including genetic factors, hormones, cytokines, abnormal mineral metabolism, transport of calcium and phosphate, and transdifferentiation of vascular smooth muscle cells towards an “osteoblast-like” phenotype [59].

The processes of atherosclerosis and bone loss – and subsequently increased fracture risk and then fractures – are linked.

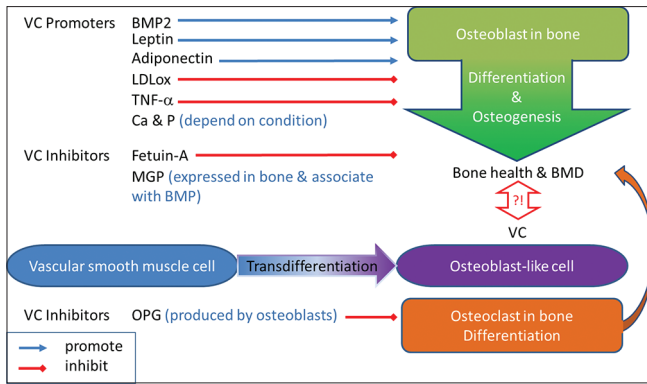


Figure 1: Flow diagram of the potential interaction in biological aspect of mechanism. VC: Vascular calcification, BMP2: Bone morphogenetic protein 2, LDLox: Oxidized low-density lipoprotein-cholesterol, TNF- α : Tumor necrosis factor-alpha, Ca: Calcium, P: Phosphorus, MGP: Matrix-gla protein, OPG: Osteoprotegerin, BMD: Bone mineral density

VC has been linked to dysregulated bone and mineral metabolism, reduced BMD and increased fracture rates [51,53,60]. If fragility fractures of the bone and VC have reciprocal causation and are mutually related, their involved, dynamic, highly regulated processes in the physiologic microenvironment of the bone and vessels may provide a more reasonable explanation for this linkage. FRAX[®] can help identify individuals at high risk of osteoporotic fractures, an increased CAC score, and cardiovascular events [34]. The relationship between fractures and CVD may be explained by the mechanisms that explain low BMD [40]. In addition, reduced physical activity after a fracture (particularly at the hip) is common and is a key risk factor for CVD [61,62].

VCs have a composition similar to bone minerals. Currently, intima-related VCs are commonly associated with atherosclerotic plaques (in the vicinity of lipid or cholesterol deposits) and recently-calcified lesions, whereas media-related VCs are associated with lesions calcified early (in the absence of lipid or cholesterol deposits) [63]. Even if medial and intimal calcifications share some common pathomechanisms and can occur together in patients, it is reasonable to maintain a distinction between the two [64]. VCs represent a complex biological process of calcium phosphate deposition and are related to regulation of osteogene expression, bone morphogenetic protein, calcification inhibitors (osteoprotegerin, matrix-Gla protein, fetuin-A) and inflammatory cytokines (tumor necrosis factor-alpha, C-reactive protein, and cluster of differentiation [CD] 40-CD154) [63,64]. Unfortunately, it is impossible, or at least extremely difficult, to distinguish between intimal and medial calcification in the coronary arteries [64]. Molecular cascades and the procalcific microenvironment during VC change as the bone microarchitecture forms [11]. Exposure to high calcium concentrations may also influence the development of low-turnover bone disease and CAC in patients on hemodialysis [65]. The flow diagram of the potential interaction in biological aspect of mechanism is drawn in Figure 1.

CONCLUSION

We list the relationships among CVD risk, BMD, TBS, fracture, VC, and CAC in Figure 2. Atherosclerosis and VC

Relationships in the literatures	
VC/CAC \uparrow	CVD \uparrow
VC/CAC \uparrow	BMD \downarrow
VC/CAC \uparrow	Fracture \uparrow
BMD \downarrow	CVD \uparrow
Fracture \uparrow	CVD \uparrow
Relationships in our previous studies	
MOF (FRAX) \uparrow	CAC \uparrow
HF (FRAX) \uparrow	CAC \uparrow
TBS \uparrow	Moderate CAC odds \uparrow
TBS \uparrow	High CAC odds (no effect)

Figure 2: The relationships among CVD risk, BMD, TBS, fracture, VC and CAC. VC: Vascular calcification, CAC: Coronary artery calcification, CVD: Cardiovascular disease, BMD: Bone mineral density, MOF: 10-year probability of major osteoporotic fracture, HF: 10-year probability of hip fracture, FRAX: Fracture risk assessment tool, TBS: Trabecular bone score

are dynamic processes; together with bone microarchitecture, they reach a dynamic equilibrium in bone remodeling. Furthermore, increased risks of hip and major osteoporotic fracture as estimated by FRAX[®] are significantly and independently associated with more severe CAC scores. DXA and FRAX[®] can be used to predict fracture risk and CAC scores and identify patients who may benefit from early intervention. Alterations in signaling pathways that are common to normal bone remodeling and arterial calcifications, such as BMP2, osteocalcin, and matrix Gla proteins, may play a role. Due to the complex regulatory networks of VCs, many interesting findings between bone health and CVD/CAC have been reported and understanding the mediators of these changes will provide valuable insight into the interaction of bone, VC and CVD risk.

Financial support and sponsorship

Nil.

Conflicts of interest

There are no conflicts of interest.

REFERENCES

1. Samelson EJ, Cupples LA, Broe KE, Hannan MT, O'Donnell CJ, Kiel DP. Vascular calcification in middle age and long-term risk of hip fracture: The Framingham Study. *J Bone Miner Res* 2007;22:1449-54.
2. Cannata-Andia JB, Roman-Garcia P, Hruska K. The connections between vascular calcification and bone health. *Nephrol Dial Transplant* 2011;26:3429-36.
3. Farhat GN, Cauley JA, Matthews KA, Newman AB, Johnston J, Mackey R, et al. Volumetric BMD and vascular calcification in middle-aged women: The Study of Women's Health Across the Nation. *J Bone Miner Res* 2006;21:1839-46.
4. Hyder JA, Allison MA, Wong N, Papa A, Lang TF, Sirlin C, et al. Association of coronary artery and aortic calcium with lumbar bone density: The MESA Abdominal Aortic Calcium Study. *Am J Epidemiol* 2009;169:186-94.
5. Toussaint ND, Lau KK, Strauss BJ, Polkinghorne KR, Kerr PG. Associations between vascular calcification, arterial stiffness and bone

- mineral density in chronic kidney disease. *Nephrol Dial Transplant* 2008;23:586-93.
6. Stary HC, Chandler AB, Dinsmore RE, Fuster V, Glagov S, Insull W Jr, et al. A definition of advanced types of atherosclerotic lesions and a histological classification of atherosclerosis. A report from the Committee on Vascular Lesions of the Council on Arteriosclerosis, American Heart Association. *Circulation* 1995;92:1355-74.
 7. Marcovitz PA, Tran HH, Franklin BA, O'Neill WW, Yerkey M, Boura J, et al. Usefulness of bone mineral density to predict significant coronary artery disease. *Am J Cardiol* 2005;96:1059-63.
 8. Erbel R, Möhlenkamp S, Moebus S, Schmermund A, Lehmann N, Stang A, et al. Coronary risk stratification, discrimination, and reclassification improvement based on quantification of subclinical coronary atherosclerosis: The Heinz Nixdorf Recall study. *J Am Coll Cardiol* 2010;56:1397-406.
 9. Möhlenkamp S, Lehmann N, Moebus S, Schmermund A, Dragano N, Stang A, et al. Quantification of coronary atherosclerosis and inflammation to predict coronary events and all-cause mortality. *J Am Coll Cardiol* 2011;57:1455-64.
 10. Bousson V, Bergot C, Sutter B, Levitz P, Cortet B, Scientific Committee of the Groupe de Recherche et d'Information sur les Ostéoporoses. Trabecular bone score (TBS): Available knowledge, clinical relevance, and future prospects. *Osteoporos Int* 2012;23:1489-501.
 11. Chuang TL, Hsiao FT, Li YD, Wang YF. TBS predict coronary artery calcification in adults. *Biomed Res Int* 2016;2016:8391589.
 12. Demer LL. Vascular calcification and osteoporosis: Inflammatory responses to oxidized lipids. *Int J Epidemiol* 2002;31:737-41.
 13. Silva BC, Leslie WD, Resch H, Lamy O, Lesnyak O, Binkley N, et al. Trabecular bone score: A noninvasive analytical method based upon the DXA image. *J Bone Miner Res* 2014;29:518-30.
 14. Winzenrieth R, Michelet F, Hans D. Three-dimensional (3D) microarchitecture correlations with 2D projection image gray-level variations assessed by trabecular bone score using high-resolution computed tomographic acquisitions: Effects of resolution and noise. *J Clin Densitom* 2013;16:287-96.
 15. Detrano R, Guerci AD, Carr JJ, Bild DE, Burke G, Folsom AR, et al. Coronary calcium as a predictor of coronary events in four racial or ethnic groups. *N Engl J Med* 2008;358:1336-45.
 16. Leber AW, Knez A, Becker A, Becker C, von Ziegler F, Nikolaou K, et al. Accuracy of multidetector spiral computed tomography in identifying and differentiating the composition of coronary atherosclerotic plaques: A comparative study with intracoronary ultrasound. *J Am Coll Cardiol* 2004;43:1241-7.
 17. Choi TY, Li D, Nasir K, Zeb I, Sourayanezhad S, Gupta M, et al. Differences in coronary atherosclerotic plaque burden and composition according to increasing age on computed tomography angiography. *Acad Radiol* 2013;20:202-8.
 18. Russo V, Zavalloni A, Bacchi Reggiani ML, Buttazzi K, Gostoli V, Bartolini S, et al. Incremental prognostic value of coronary CT angiography in patients with suspected coronary artery disease. *Circ Cardiovasc Imaging* 2010;3:351-9.
 19. Wexler L, Brundage B, Crouse J, Detrano R, Fuster V, Maddahi J, et al. Coronary artery calcification: Pathophysiology, epidemiology, imaging methods, and clinical implications. A statement for health professionals from the American Heart Association. Writing Group. *Circulation* 1996;94:1175-92.
 20. Raggi P, Shaw LJ, Berman DS, Callister TQ. Prognostic value of coronary artery calcium screening in subjects with and without diabetes. *J Am Coll Cardiol* 2004;43:1663-9.
 21. Imanzadeh A, George E, Kondo T, Takase S, Amanuma M, Rybicki FJ, et al. Coronary artery calcium score and CT angiography in asymptomatic elderly patients with high pretest probability for coronary artery disease. *Jpn J Radiol* 2016;34:140-7.
 22. Chuang TL, Hsiao FT, Li YD, Wang YF. Bone mineral density in evaluation of the severity of coronary artery calcification. *Ann Nucl Med Mol Imag* 2017;30:55-61.
 23. Erbel R, Lehmann N, Möhlenkamp S, Churzidse S, Bauer M, Kälsch H, et al. Subclinical coronary atherosclerosis predicts cardiovascular risk in different stages of hypertension: Result of the Heinz Nixdorf Recall Study. *Hypertension* 2012;59:44-53.
 24. Lehmann N, Erbel R, Mahabadi AA, Kälsch H, Möhlenkamp S, Moebus S, et al. Accelerated progression of coronary artery calcification in hypertension but also prehypertension. *J Hypertens* 2016;34:2233-42.
 25. Choi BH, Joo NS, Kim MJ, Kim KM, Park KC, Kim YS. Coronary artery calcification is associated with high serum concentration of undercarboxylated osteocalcin in asymptomatic Korean men. *Clin Endocrinol (Oxf)* 2015;83:320-6.
 26. Freedman BI, Divers J, Russell GB, Palmer ND, Bowden DW, Carr JJ, et al. Plasma FGF23 and Calcified Atherosclerotic Plaque in African Americans with Type 2 Diabetes Mellitus. *Am J Nephrol* 2015;42:391-401.
 27. Kuipers AL, Zmuda JM, Carr JJ, Terry JG, Patrick AL, Ge Y, et al. Association of volumetric bone mineral density with abdominal aortic calcification in African ancestry men. *Osteoporos Int* 2014;25:1063-9.
 28. Magnus JH, Broussard DL. Relationship between bone mineral density and myocardial infarction in US adults. *Osteoporos Int* 2005;16:2053-62.
 29. Tankó LB, Christiansen C, Cox DA, Geiger MJ, McNabb MA, Cummings SR. Relationship between osteoporosis and cardiovascular disease in postmenopausal women. *J Bone Miner Res* 2005;20:1912-20.
 30. Schulz E, Arfai K, Liu X, Sayre J, Gilsanz V. Aortic calcification and the risk of osteoporosis and fractures. *J Clin Endocrinol Metab* 2004;89:4246-53.
 31. Barendolts EI, Berman M, Kukreja SC, Kouznetsova T, Lin C, Chomka EV. Osteoporosis and coronary atherosclerosis in asymptomatic postmenopausal women. *Calcif Tissue Int* 1998;62:209-13.
 32. Wiegandt YL, Sigvardsen PE, Sørgaard MH, Knudsen AD, Rerup SA, Kühl JT, et al. The relationship between volumetric thoracic bone mineral density and coronary calcification in men and women—results from the Copenhagen General Population Study. *Bone* 2019;121:116-20.
 33. Choi SH, An JH, Lim S, Koo BK, Park SE, Chang HJ, et al. Lower bone mineral density is associated with higher coronary calcification and coronary plaque burdens by multidetector row coronary computed tomography in pre- and postmenopausal women. *Clin Endocrinol (Oxf)* 2009;71:644-51.
 34. Chuang TL, Li YD, Hsiao FT, Chuang MH, Wang YF. FRAX® Fracture Risks Are Associated with Coronary Artery Calcification Score. *Dis Markers* 2017;2017:1592598.
 35. Campos-Obando N, Kavousi M, Roeters van Lennep JE, Rivadeneira F, Hofman A, Uitterlinden AG, et al. Bone health and coronary artery calcification: The Rotterdam Study. *Atherosclerosis* 2015;241:278-83.
 36. Malluche HH, Blomquist G, Monier-Faugere MC, Cantor TL, Davenport DL. High Parathyroid Hormone Level and Osteoporosis Predict Progression of Coronary Artery Calcification in Patients on Dialysis. *J Am Soc Nephrol* 2015;26:2534-44.
 37. Cejka D, Weber M, Diarra D, Reiter T, Kainberger F, Haas M. Inverse association between bone microarchitecture assessed by HR-pQCT and coronary artery calcification in patients with end-stage renal disease. *Bone* 2014;64:33-8.
 38. Chen Z, Qureshi AR, Brismar TB, Ripsveden J, Haarhaus M, Barany P, et al. Differences in association of lower bone mineral density with higher coronary calcification in female and male end-stage renal disease patients. *BMC Nephrol* 2019;20:59.
 39. Ahmadi N, Mao SS, Hajsadeghi F, Arnold B, Kiramijyan S, Gao Y, et al. The relation of low levels of bone mineral density with coronary artery calcium and mortality. *Osteoporos Int* 2018;29:1609-16.
 40. Veronese N, Stubbs B, Crepaldi G, Solmi M, Cooper C, Harvey NC,

- et al. Relationship Between Low Bone Mineral Density and Fractures With Incident Cardiovascular Disease: A Systematic Review and Meta-Analysis. *J Bone Miner Res* 2017;32:1126-35.
41. Reginster JY, Burlet N. Osteoporosis: A still increasing prevalence. *Bone* 2006;38:S4-9.
 42. Xu R, Yang HN, Li YQ, Wang QF, Guo AH, Ayiti A, et al. Association of coronary artery calcium with bone mineral density in postmenopausal women. *Coron Artery Dis* 2016;27:586-91.
 43. Gabet Y, Bab I. Microarchitectural changes in the aging skeleton. *Curr Osteoporos Rep* 2011;9:177-83.
 44. Chow JT, Khosla S, Melton LJ 3rd, Atkinson EJ, Camp JJ, Kearns AE. Abdominal aortic calcification, BMD, and bone microstructure: A population-based study. *J Bone Miner Res* 2008;23:1601-12.
 45. Aleksova J, Kurniawan S, Vucak-Dzumhur M, Kerr P, Ebeling PR, Milat F, et al. Aortic vascular calcification is inversely associated with the trabecular bone score in patients receiving dialysis. *Bone* 2018;113:118-23.
 46. Sennerby U, Farahmand B, Ahlbom A, Ljunghall S, Michaëlsson K. Cardiovascular diseases and future risk of hip fracture in women. *Osteoporos Int* 2007;18:1355-62.
 47. Szulc P. Vascular calcification and fracture risk. *Clin Cases Miner Bone Metab* 2015;12:139-41.
 48. Sennerby U, Melhus H, Gedeberg R, Byberg L, Garmo H, Ahlbom A, et al. Cardiovascular diseases and risk of hip fracture. *JAMA* 2009;302:1666-73.
 49. Chiang CH, Liu CJ, Chen PJ, Huang CC, Hsu CY, Chen ZY, et al. Hip fracture and risk of acute myocardial infarction: A nationwide study. *J Bone Miner Res* 2013;28:404-11.
 50. Silva HC, Pinheiro MM, Genaro PS, Castro CH, Monteiro CM, Fonseca FA, et al. Higher prevalence of morphometric vertebral fractures in patients with recent coronary events independently of BMD measurements. *Bone* 2013;52:562-7.
 51. Bagger YZ, Tankó LB, Alexandersen P, Qin G, Christiansen C; Prospective Epidemiological Risk Factors Study Group. Radiographic measure of aorta calcification is a site-specific predictor of bone loss and fracture risk at the hip. *J Intern Med* 2006;259:598-605.
 52. Bastos Gonçalves F, Voûte MT, Hoeks SE, Chonchol MB, Boersma EE, Stolker RJ, et al. Calcification of the abdominal aorta as an independent predictor of cardiovascular events: A meta-analysis. *Heart* 2012;98:988-94.
 53. Rajzbaum G, Roger VL, Bézie Y, Chauffert M, Bréville P, Roux F, et al. French women, fractures and aortic calcifications. *J Intern Med* 2005;257:117-9.
 54. Szulc P, Blackwell T, Schousboe JT, Bauer DC, Cawthon P, Lane NE, et al. High hip fracture risk in men with severe aortic calcification: MrOS study. *J Bone Miner Res* 2014;29:968-75.
 55. Arceo-Mendoza RM, Camacho P. Prediction of fracture risk in patients with osteoporosis: A brief review. *Womens Health (Lond)* 2015;11:477-82.
 56. Tanna N, Patel K, Moore AE, Dulnoan D, Edwards S, Hampson G. The relationship between circulating adiponectin, leptin and vaspin with bone mineral density (BMD), arterial calcification and stiffness: A cross-sectional study in post-menopausal women. *J Endocrinol Invest* 2017;40:1345-53.
 57. McFarlane SI, Muniyappa R, Shin JJ, Bahtiyar G, Sowers JR. Osteoporosis and cardiovascular disease: Brittle bones and boned arteries, is there a link? *Endocrine* 2004;23:1-0.
 58. Parhami F, Morrow AD, Balucan J, Leitinger N, Watson AD, Tintut Y, et al. Lipid oxidation products have opposite effects on calcifying vascular cell and bone cell differentiation. A possible explanation for the paradox of arterial calcification in osteoporotic patients. *Arterioscler Thromb Vasc Biol* 1997;17:680-7.
 59. Persy V, D'Haese P. Vascular calcification and bone disease: The calcification paradox. *Trends Mol Med* 2009;15:405-16.
 60. Rodríguez AJ, Scott D, Hodge A, English DR, Giles GG, Ebeling PR. Associations between hip bone mineral density, aortic calcification and cardiac workload in community-dwelling older Australians. *Osteoporos Int* 2017;28:2239-45.
 61. O'Halloran PD, Blackstock F, Shields N, Holland A, Iles R, Kingsley M, et al. Motivational interviewing to increase physical activity in people with chronic health conditions: A systematic review and meta-analysis. *Clin Rehabil* 2014;28:1159-71.
 62. Cheng SJ, Yu HK, Chen YC, Chen CY, Lien WC, Yang PY, et al. Physical activity and risk of cardiovascular disease among older adults. *Int J Gerontol* 2013;7:133-6.
 63. Lanzer P, Boehm M, Sorribas V, Thiriet M, Janzen J, Zeller T, et al. Medial vascular calcification revisited: Review and perspectives. *Eur Heart J* 2014;35:1515-25.
 64. Amann K. Media calcification and intima calcification are distinct entities in chronic kidney disease. *Clin J Am Soc Nephrol* 2008;3:1599-605.
 65. Ok E, Asci G, Bayraktaroglu S, Toz H, Ozkahya M, Yilmaz M, et al. Reduction of dialysate calcium level reduces progression of coronary artery calcification and improves low bone turnover in patients on hemodialysis. *J Am Soc Nephrol* 2016;27:2475-86.